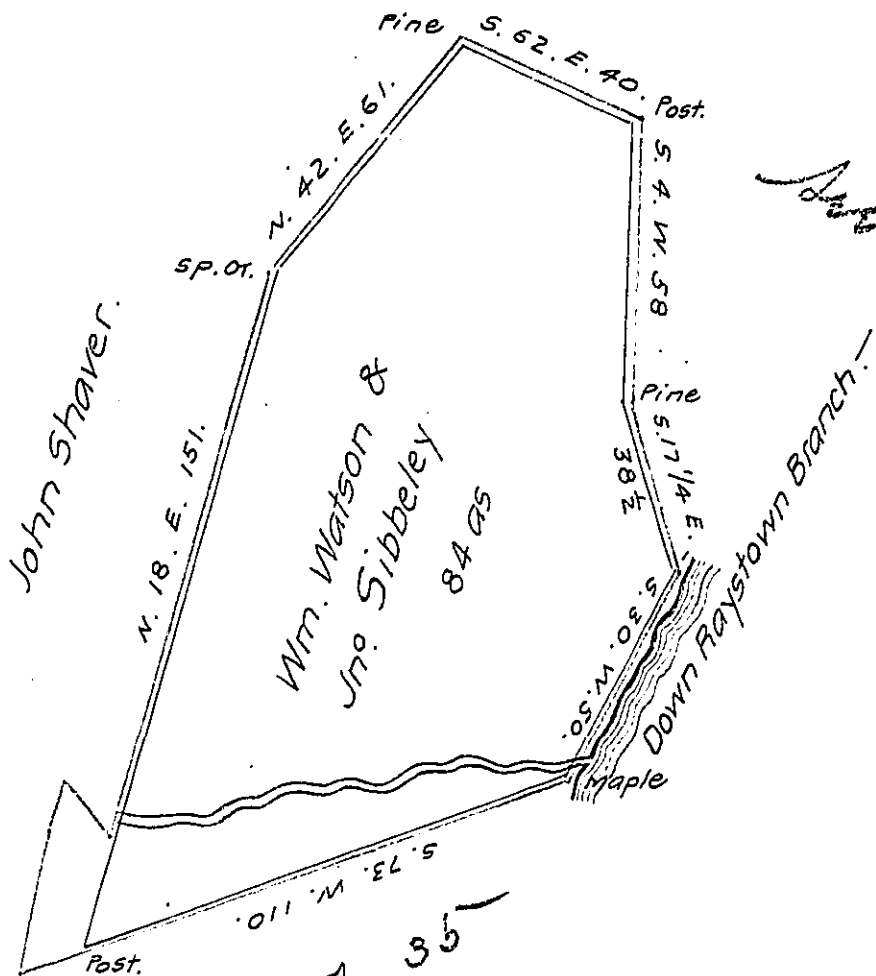


D. 16. 299



Aug C. 111-122

D. 7-35

Situate on the north side of the Raystown Branch of Juniatta -
 fronting the plantation of William Dunn containing eighty four
 acres and allowance of six per cent, in Walter township, Huntingdon
 County. Surveyed for William Watson & Jno. Sibbeley on order No
 5438 dated the 13th April 1769

Daniel Africa D.S.

To Jacob Spangler Esqr S.G.

The green lines represent the draught of a survey made for Martin
 Hisingon warrant dated the 12th day January 1791. This survey in-
 terferes eighty four acres ~~and~~ with the Wm. Watson & Jno Sibbeley
 tract. Martin Hising conveyed to Julian Hawn whose widow &
 heirs now occupy the same.

Martin Hising not pat'd.

IN TESTIMONY that the above is a copy of the original remaining on file in
 the Department of Internal Affairs of Pennsylvania, made
 conformably to an Act of Assembly approved the 16th day of
 February, 1833, I have hereunto set my Hand and caused
 the Seal of said Department to be affixed at Harrisburg,
 this thirtieth day of October 1908

Henry Howard
 Secretary of Internal Affairs.